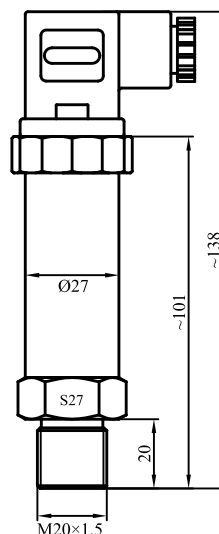


T1700 Pressure transmitter



Dimension in:mm

T1700 series pressure transmitter is used for absolute vacuum measuring control, which has fully solved the problem of difficult vacuum measurement. All the existing pressure connections and electrical connections are available for T1700 series pressure transmitter.

T1700 Order Ref NO

T1700-A4-1.0-M-0.25-H-G-1.0

A B C D E F G

A Output	B Measurement range	C Unit of measure	D Accuracy	E Electrical connector	F Pressure connection	G Cable length(m)
A4=4~20mA		K=kPa	0.25=±0.25%F.S	H=DIN43650-A	G=G1/4	
V0=0~5V		M=MPa		GX=GX16-7	N=NPT1/4	
V1=1~5V		P=psi		C=Cable	R=R1/4	
V10=0~10V		B=bar			U=7/16-20UNF	
					M=M20×1.5	
					N2=NPT1/2	
					G2=G1/2	
					R2=R1/2	

Specification

General	Value
Measuring Range	Absolute pressure 0.1.....400bar
Overload Capability	1. 5 times full scale
Burst Pressure	3 times full scale
Accuracy	±0.25%F.S,±0.5%F.S
Stable	Typically 0.25%F.S., MAX: 0.4%F.S
Medium Temperature Range	40℃~85℃ (40℃~125℃ is available on request)
Compensated Temperature	10℃~70℃
Medium	compatible with stainless steel1Cr18Ni9Ti
Electrical overview	2 wire 3 wire
Output	4~20mA 0~5V 0~10V
Power Supply	10~30VDC 6~24VDC\10~36VAC 11~30VDC\20~36VAC
Load	<U-10> /0.02 (Ω) > 100K (Ω)
Insulation resistance	> 100M (Ω) @50V
Electrical Connection	DIN43650,Protecting Class IP65
	GX16-7,Protecting Class IP45
	waterproof wire lead (Class 5) ,Protecting Class IP68
Pressure Connection	M20×1.5, G1/2, G1/4, NPT1/4, NPT1/2
Response time	10ms
Electro Magnetic Compatibility	EN50081-1/-2 ; EN50082-2

Conversion:1bar=14.5psi 1MPa=10bar