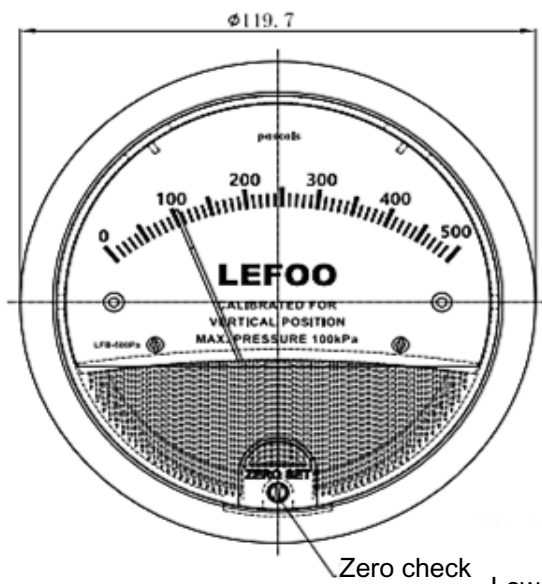


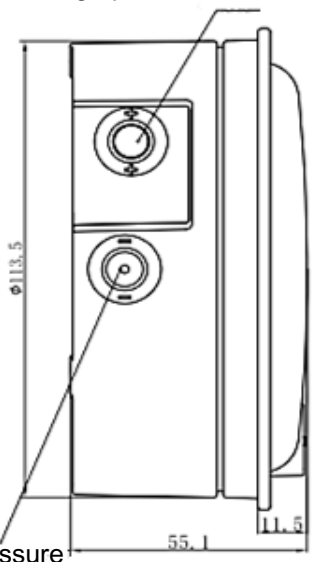
LFB

Differential pressure gauge

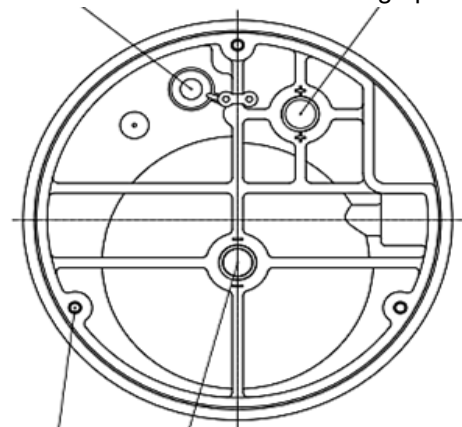


LEFOO

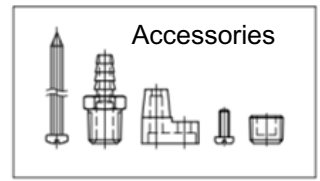
High pressure connection



Pressure relief rubber High pressure connection



Mounting hole Low pressure connection



Dimension:mm

LFB series is widely used for measuring the fans or blowers pressure, filter resistant, wind speed, furnace gas pressure, Orifice pressure difference, bubble level and hydraulic system pressure. It is also applied to regulate the air-gas combustion ratio and automatic valve or detecting the breathing, and blood pressure in medical equipment. There are some more applications like micro-electronics, aviation and space, environmental protection project, biological engineering, intelligent building, HVAC, food and beverage and precision electronic processing

Specification :
 Magnetic link drive mechanism eliminates friction caused by gear drive fundamentally
 No necessity to fill with liquid
 Motion of the pointer without inertia or drift
 No hysteresis
 Excellent anti-vibration and anti-shaking performance
 Positive, negative or differential pressure can be measured
 multiple ranges are optional, minimum 0 ~ 30Pa to maximum 0 ~ 10kPa
 2 sets of pressure ports (side, back) + 3 mounting modes = free and flexible application
 Excellent accuracy, reasonable price.

Technical

Model	LFB
Measuring range	0-30Pa, -30-30Pa, 0-60Pa, -60-60Pa, 0-125Pa, -125-125Pa, 0-250Pa, -250-250Pa, 0-300Pa, 0-500Pa, 0-750Pa, 0-1kPa, 0-2kPa, 0-3kPa, 0-4kPa, 0-5kPa, 0-6kPa, 0-7kPa, 0-8kPa, 0-9kPa, 0-10kPa
Accuracy	± 2% FS under 21 °C (pressure > 60pa: ±3%, pressure < 60pa : ± 4%)
Over load	around 110kPa ~150kPa , the rubber plug for overpressure will be flush away
Environment temperature	-7°C~ 60°C
IP Class	IP67