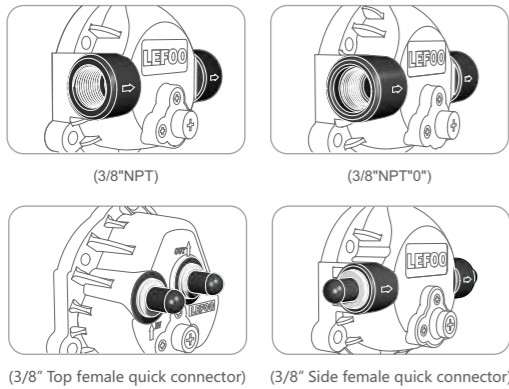


LFP1000A SERIES

Diaphragm Booster Pump



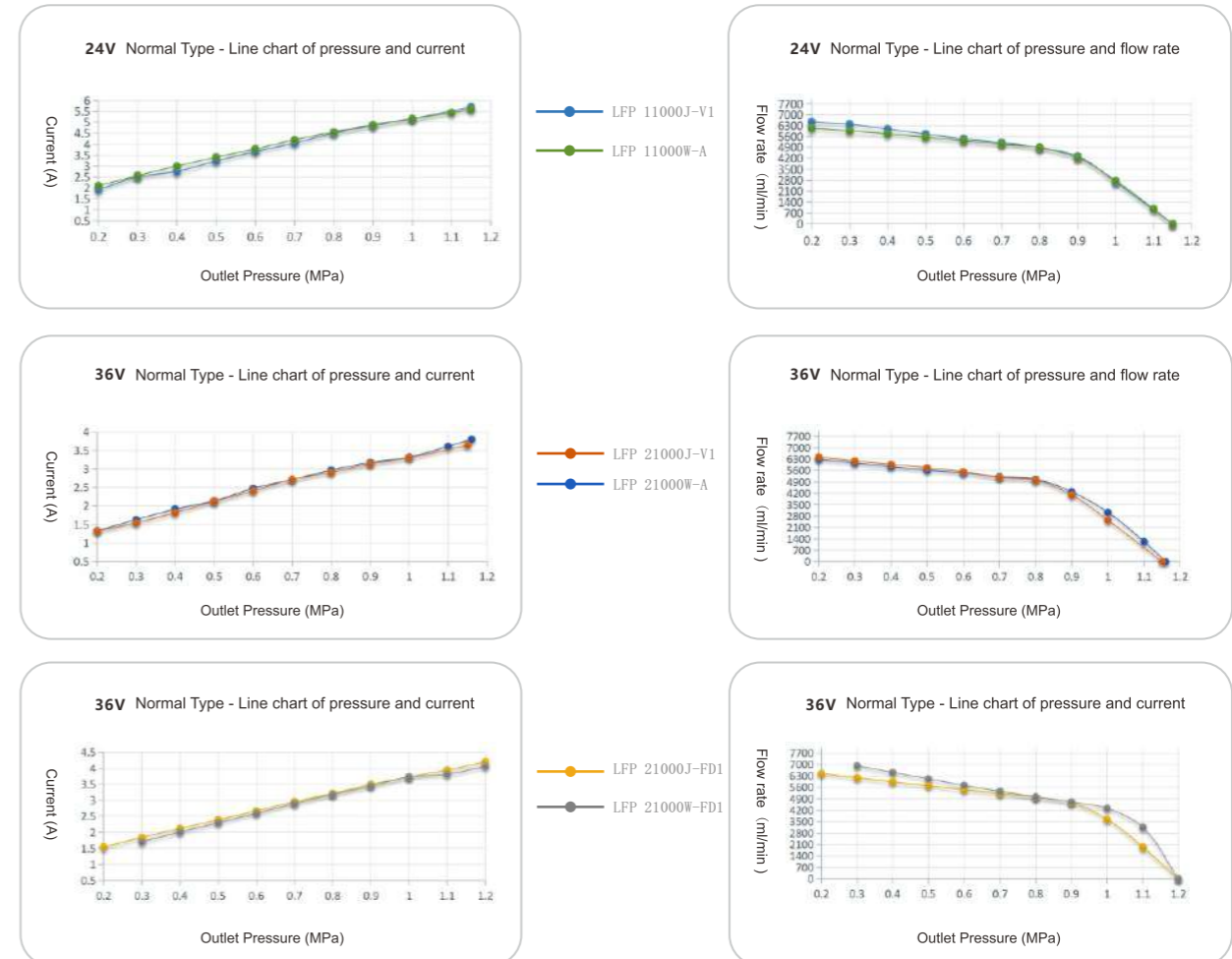
Connection



Product Specifications

Model	LFP11000J-V1	LFP11000W-A	LFP21000J-V1	LFP21000J-FD1	LFP21000W-A	LFP21000W-FD1
Voltage	24V DC		36V DC			
Inlet Water Pressure	0.2MPa		0.2MPa			
Working Pressure	0.7MPa		0.7MPa			
Working Current	≤5.0A		≤3.5A			
Working Flow Rate	≥5000ml/min		≥5000ml/min			
Open Flow	≥6000ml/min		≥6000ml/min			≥6500ml/min
Bypass Pressure	1.1-1.3Mpa	0.95-1.15MPa	1.1-1.3Mpa	1.05-1.2MPa	1.05-1.2MPa	1.0-1.2MPa
Maximum Current	≤6.0A		≤4.5A			

Flow Curve



Mounting Dimension: mm

