

FEATURES

- Embedded installation, suitable for switch box
- Sound and light alarm, range, and alarm, on sitesetting
- Large-size LCD digital display, easy to operate
- 316L stainless steel panel has no dust andcorrosion resistance
- Imported micro-pressure sensing element, pressure sensitive



DESCRIPTION

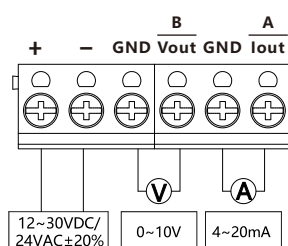
LFM55 Differential Pressure Transmitter is widely used in differential pressure detection of air or neutral gas. The product installation takes up small space, and can be embedded in system surface or installed inside switch box. The product panel is made of 316L stainless steel. The surface is smooth and dust-free and has strong corrosion resistance, which meets clean room standard. Customers can setup measurement range, communication address and other functions on site. The product has sound and light alarm function, and can set the alarm pressure point, alarm delay time, and alarm function on/off on site. The product adopts imported micro-pressure sensing element with temperature compensation, and has the characteristics of sensitive pressure response, long-term output stability, and excellent temperature performance. The products can be widely used in clean rooms, operating rooms, dust-free laboratories, also suitable for HVAC, intelligent buildings and other applications.

SPECIFICATION

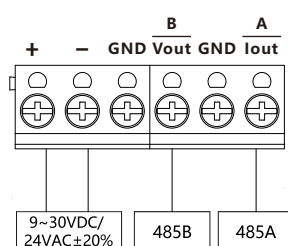
Medium	Dry air and neutral gases	
Pressure range	±100Pa, Field configurable range	
Display	Backlit LCD display, display screen size 45×30 mm	
Display resolution	0.1Pa	
Overload pressure	7Kpa	
Accuracy	±1Pa	
Operating temperature	-20℃~70℃	
Compensation temperature	-10℃~60℃	
Storage temperature	-40℃~80℃	
Protection grade	IP30	
Electrical connection	Four-wired	Six-wired
Output signal ①	RS485	4~20mA/0~10VDC
Power supply	9~30VDC/24VAC±20%	12~30VDC/24VAC±20%
Pressure connection	φ6.5mm,quick fit	
Communication	RS-485 Standard interface, Modbus RTU protocol	
Shell material	Fireproof Plastic UL94 V0 & Stainless Steel Panel	
Certification	ROHS、CE	
Weight (Approximate)	225g	

①When the product is powered by an AC power supply, it is recommended to use an isolated AC power supply.

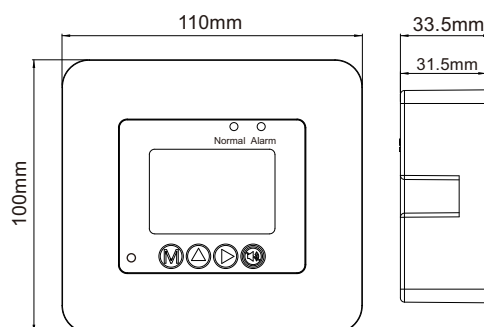
WIRING AND DIMENSIONS



• Wiring diagram of analog output version

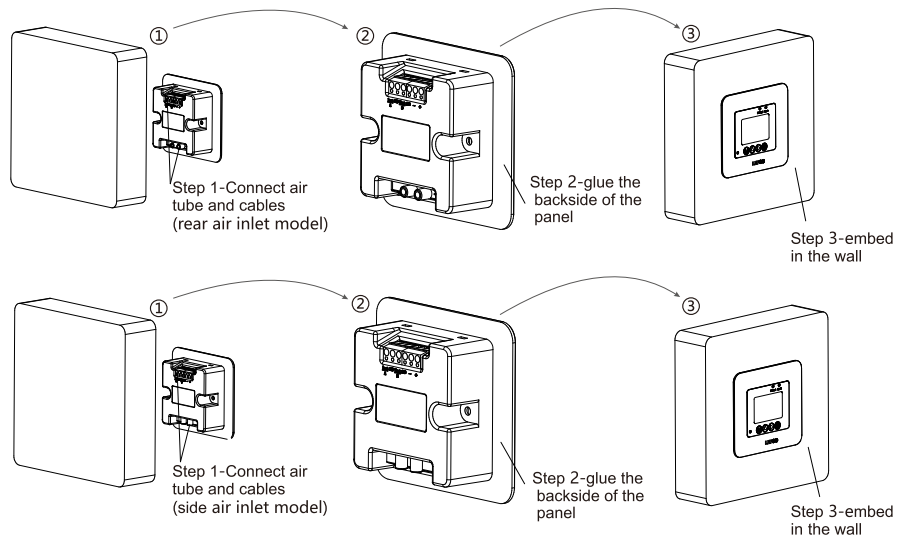
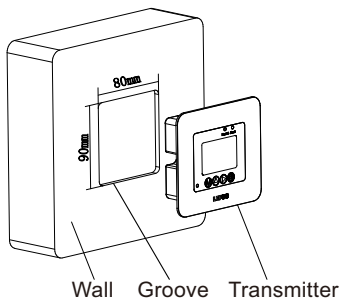


• RS485 output wiring diagram

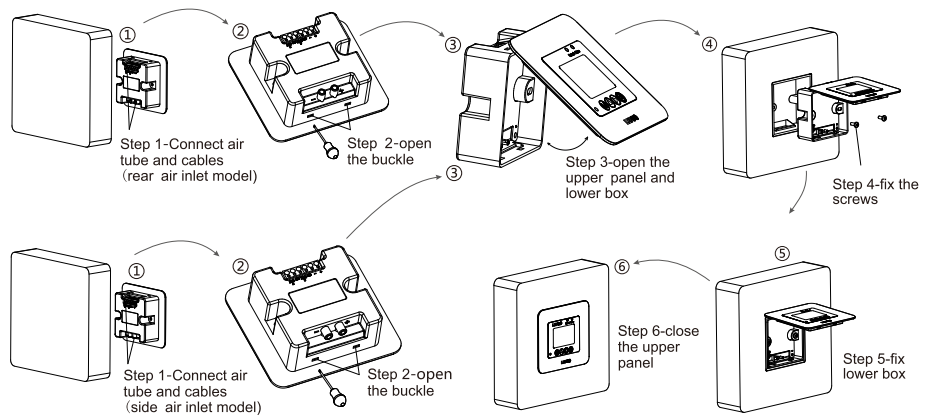
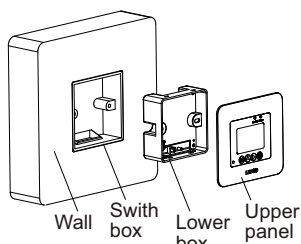


ORDER REF NO.

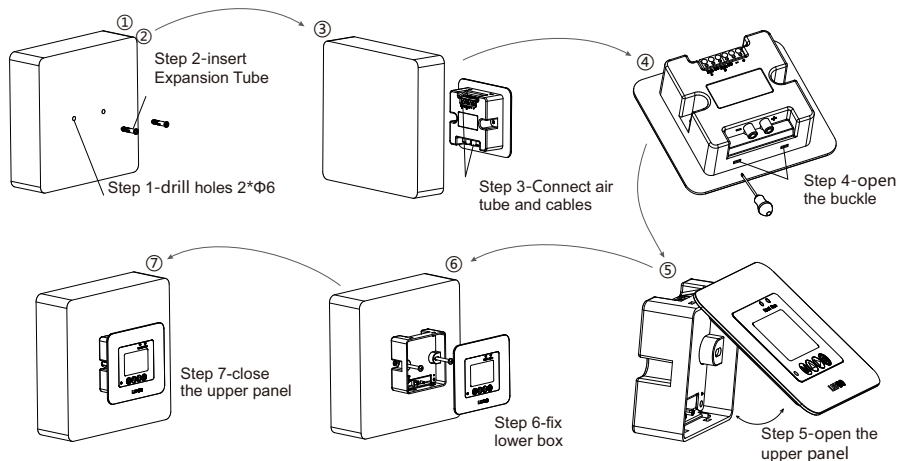
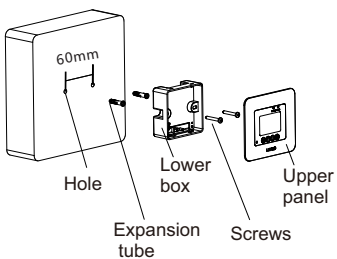
【1】 Embedded installation



【2】 Switch box Installation



【3】 Wall Mount



ORDER REF NO.

Code and Description					Remark
LFM55					Model
	1	-25~25Pa			Measurement Range
	2	-50~50Pa			
	3	-100~100Pa			
	4	Customized Range			
	A		4~20mA&0~10VDC(simultaneous output)		Output Method
	E		RS-485 Communication		
	S		Side Intake		Air Intake Direction
	B		Rear Air Intake		
	F		Front Panel Air Intake		
LFM55	1	A	S	Model Selection Example	

Note: LFM551AS refer to measure range is $\pm 25\text{Pa}$, 4~20mA and 0~10VDC output, side air intake.