

DESCRIPTION

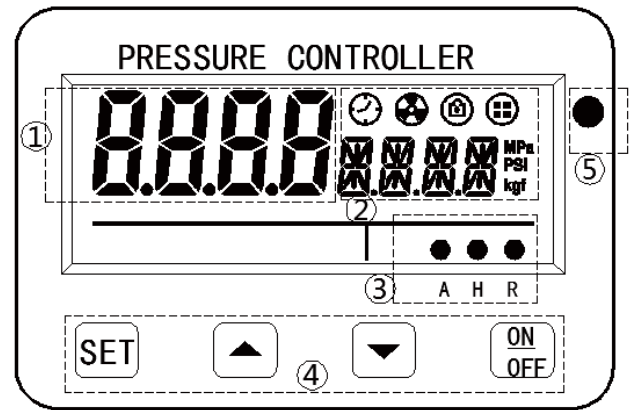
Description

LFDS63 Series smart pressure controller combine measurement, display and control into one instrument which can turn on/off the relay output automatically according the pressure level of containers to ensure the required pressure. This Series have many features such as easy operation, clear display, anti-vibration, high accuracy and long life.

01

INTERFACE

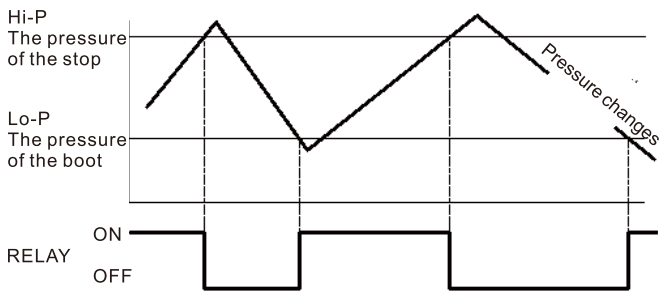
Interface



①Main Screen	Display pressure value; display the prompt while set the parameter
②Second Screen	Display the setting parameter
③Mode	A: AUTO H: Manual R: Working
④Button	SET: Confirm the shift or setting parameter
	▲ : Increase value
	▼ : Decrease value
	ON/OFF : on/off button; Location shift while setting the parameter
⑤Indicator light	Indicate while overpressure, overload or leakage of system.

02

How the relay works?



The relay will ON/OFF load automatically according the setting start pressure (Lo-P) and stop pressure (Hi-P) in automatic mode. User need to push ON/OFF button to start while the default is OFF while power on. The indicator light will flick if in ON status, while the light will on if in OFF

03

HOW TO OPERATE?

How to operate?

Set Start/Stop Pressure

Press SET to check the stop (Hi-P) or start (Lo-P) pressure, (HI-P) > (Lo-P).



(Secondary Screen)

Press SET to check Hi-P  
Press ▲ or ▼ to adjust Hi-P base value, press and hold can be adjust rapidly  
Press SET again to check Lo-P  
Press ▲ or ▼ to adjust LO-P base value, press and hold can be adjust rapidly.

Zero Calibration

Zero Calibration is the function that the pressure shows '0'forcibly while port in atmosphere.



Lock Function

<Lock>



Secondary screen show

04

<Unlock>



Check Relay Running Time



1: This mean the running time is 2 hours and 15minutes. The frame lasts for 8 seconds.

Menu Function

Press and hold SET button for 2 seconds into menu function, the instruction is following:

Symbol	How to operate	Instruction
Set working mode F1	press ▲▼ to chose AUTO or HAND mode and press SET to confirm	AUTO: control the loading automatically HAND: start or stop forcibly
Set keyboard lock mode F2	press ▲▼ to chose EASY or CODE mode, and press to activate the pin and start location shift operation, press SET to confirm	EASY mode: Press ON/OFF and ▲ together to lock or unlock. CODE mode: press ON/OFF and ▲ together and input the pin, initial pin:0000
Units F3	Press ▲▼ to chose MPa, PSI or kgf then press SET to confirm and back main working status	Can chose MPa, PSI or kgf/cm² Default: kgf/cm²(1)
Working function chose F4	Press ▲▼ to chose "R on" or "R oFF" then press SET to confirm, then back to main operation status	"R on": automatic start while power on "RoFF": manual start while power on(default)

05

1: 1kgf/cm²≈ 1 Bar

Specification

Item	Type	Vacuum (Negative)	Middle
Pressure Range		-101~0Kpa	0~1...5MPa
Proof Pressure		1.5 times	
Medium		Gases or liquids compatible with 1Cr18Ni9Ti, copper, fluoro rubber or nitrile rubber	
Rated Voltage		110V/220VAC	
Power Consumption		1.3W	
Loading Capacity		10A max.	
Waterproof Grade		IP54	
Connection		Brass NPT1/4 Male(optional)	
Accuracy		±1%F.S	
Storage Temperature		-40-85℃	
Operation Temperature		-10-50℃	

Notice

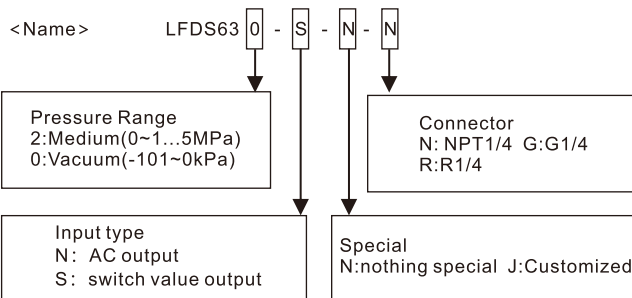
- This series are mainly applied in industrial environment.
- Please use rated voltage and under proof pressure, or may cause danger or damage of products
- Make sure the power is off while wiring, incorrect wiring may cause danger or malfunction.
- If the equipment starts frequently, please check the difference between Hi-P and Lo-P, and make the adjustment.
- High voltage inside the equipment, please do not disassemble it, only expert can maintain the equipment.

06

Abnormalities Suggestion

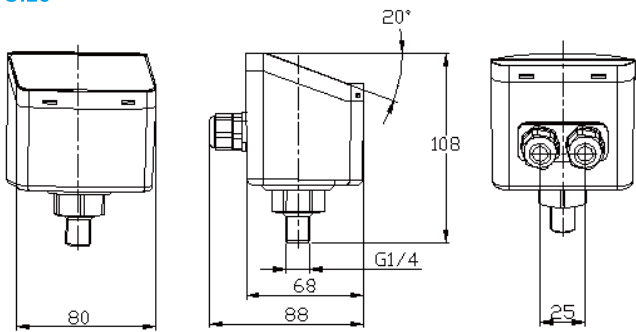
Error Name	Prompt	Instruction	How to settle
Residual Pressure Error	Err1	Pressure is too high while zero calibration	The out pressure of the port should be atmosphere
Incorrect Pin	Err5	Incorrect Pin	Input correct Pin
Abnormal Pressure	UP	Setting value exceed upper limit	Adjust Hi-P value
	DOWM	Setting value exceed lower limit or Hi-P > Lo-P	Adjust Lo-P value
Overpressure	FULL	Exceed the pressure range	Decrease the pressure
Higher pressure setting	Indicator light on(1)	Pressure > Hi - P	Decrease the pressure
Lower pressure protection	Indicator light flash(2)	Low pressure or leakage	Check the gas tightness, loading status or adjust Hi-P and Lo-P value
Lock Button	LOCK	Buttons are locked	Press ▲ and ON/OFF together

Order Reference



07

Size



Power Connection

