

LEFOO

LEFOO INDUSTRIAL CO.,LTD.

No.118, Changda Road, Linping Str, Linping Dist, Hangzhou City, Zhejiang Province, China

Mobile/WhatsApp/WeChat: +86-18268876736

www.lefoogroup.com

E-mail: kelvin@lefoo.com

XHB01020240505GFQ

BRUSHLESS DC PUMP



ABOUT LEFOO



LEFOO was founded in 2000, which is a National High-tech Enterprise of R&D, manufacturing, and sales.

LEFOO has been awarded "Little Giant" firms and "Specialized and Sophisticated Enterprises" by the Ministry of Industry and Information Technology of the People's Republic of China. LEFOO is a group company with 3 subsidiary corporations,

LEFOO Industrial Co., Ltd, LEFOO Controls Co., Ltd, and Zhejiang LEFOO Sensing Technology Co., Ltd. LEFOO is committed to become the leading and world-class enterprise in R&D and manufacturing to supply professional water pumps, mechanical structure controls, electronic digital sensing controls, which can be widely used in water purification, water treatment, home appliances, drink and beverage, environmental control, mechanical equipment, intelligent equipment, medical, power, Internet of things, and other industrial fields.

LEFOO already passed international management system certifications of ISO9001, ISO16949, ISO45001, ISO14001 and LEFOO has passed many product certifications of CE, RoHS, FDA, NSF, UL, CSA, 3C that authorized by TUV and SGS. LEFOO has more than 130 patents in total, includes 9 patents for invention. Over the past 20 years, LEFOO's market throughout more than 80 countries and regions in North America, South America, Europe, Asia, Africa, and Australia. As a professional and trustworthy supplier, LEFOO has cooperated and established strategic partnership with many great companies, Fortune Global 500, and world-famous brands.

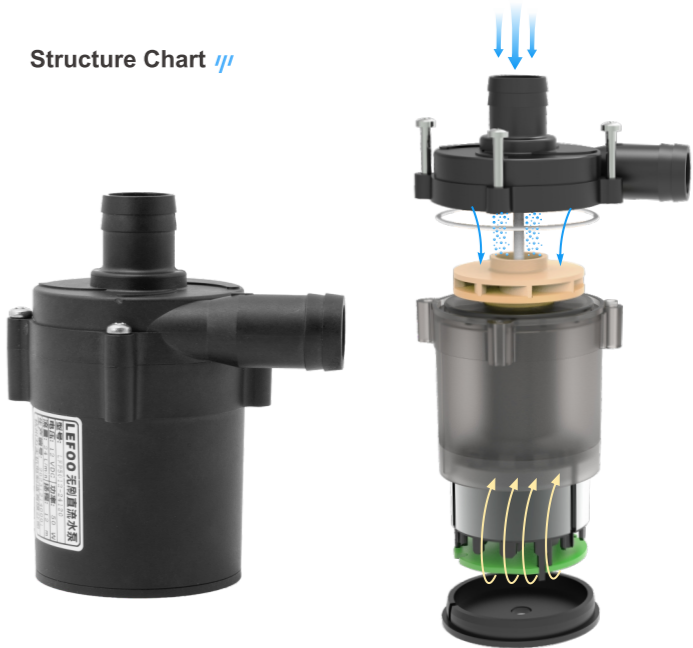
"Quality & Service First, Focus on Technology & Innovation", adhering to this philosophy, LEFOO will continue to do best to meet the growing market requirements, provide advanced, reliable and exquisite products and service to all of customers.

BRUSHLESS DC PUMP

Product Overview

Brushless DC water pump is also known as BLDC water circulation pump. It is a water pump that uses a brushless motor to drive centrifugal impeller. When working, it relies on a high-speed rotating impeller to drive the liquid. The liquid obtains energy and increases the pressure under the action of inertial centrifugal force, thereby realizing the transmission of the liquid. Compared with traditional water pumps, brushless DC water pumps have the advantages of long life, small size, low noise, good stability, high lift of pump, and wide flow range. It adopts FOC vector control, has multiple protection functions, stepless speed regulation and real-time monitoring of operating status, etc. making intelligent modern life possible.

Structure Chart



Product Applications



Mechanical Pressure Control R&D Center



Mechanical structure control class

Widely used in HVAC, building automation, water treatment systems, household appliances, industrial automation and many other fields.

Digital Sensing Control R&D Center



Digital sensing control

Widely used in water treatment system, pump control, environmental control, intelligent equipment, and other fields.

Fluid Mechanics R&D Center



Water pumps

Widely used in water purification system, drinking water filtration system, RO purifier, water dispenser, sparkling water machine, soda machine, water cooler dispenser, beverage dispenser, home appliances, water circulation system, misting system, and other fields.



Low Noise

Adopting low vibration and low noise FOC control method and suspended rotor design, the noise is as low as 25dB(A)



Long lifetime

Matching three-phase brushless DC motor and self-lubricating rotating structure, lifetime is over 20,000 hours



Large flow rate, High lift of pump

Using high-efficiency closed impeller and intelligent control motor, the flow and lift performance is more stable and the lift of pump is higher.



Certifications

Compliant with CE, RoHS, FDA, CQC certifications.



Customized is available

Can be customized functions like 105℃ medium, IP68 grade, PWM speed control, 0-5V speed control, etc.



Full protection functions

Multiple protection functions of no-load running, blocked rotor, reverse connection, over-current, etc.



No leakage

Static seal design, isolates the stator from the liquid, high-strength and high-temperature resistant polymer plastic, no deformation and no leakage risk.

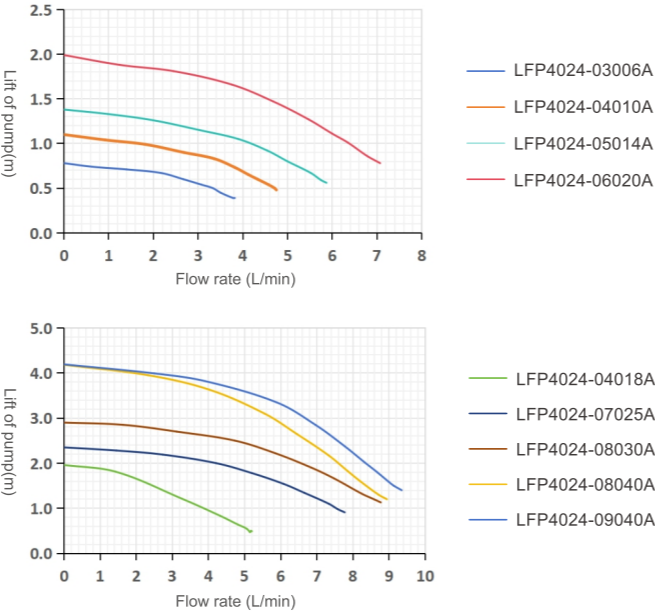


LFP40 SERIES

Brushless DC Water Pump



○ Flow Curve

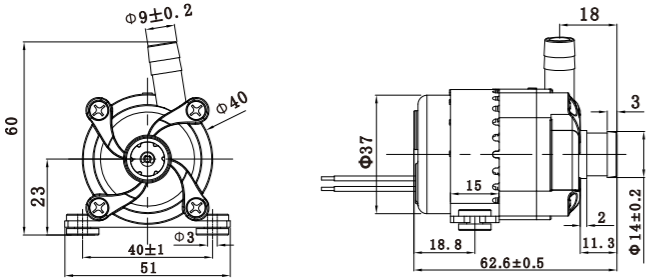


○ Working Conditions

Ambient temperature: -20~+40℃	Rated voltage: 24VDC	Insulation grade: F	IP grade: IP55 or IP68 optional
Medium temperature: -20~+60℃	Voltage range: 18~30VDC	Lifetime: 20000 hours	Medium: Cool water, hot water, and other fluid

○ Specifications

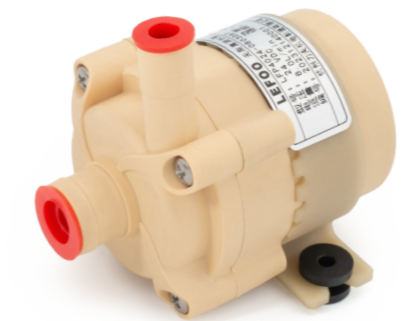
Model	Selections	Rated voltage (VDC)	Max. Flow rate (L/min)	Max. Lift of pump (m)	Max. Current (A)	Max. Power (W)	Controls
LFP4024 Series	LFP4024-03006A	24	3	0.6	0.13	3	· FG Signal · 0-5V speed regulation · PWM speed regulation
	LFP4024-04010A	24	4	1.0	0.23	5.5	
	LFP4024-04018A	24	4	1.8	0.23	5.5	
	LFP4024-05014A	24	5	1.4	0.31	7.5	
	LFP4024-06020A	24	6	2.0	0.42	10	
	LFP4024-07025A	24	7	2.5	0.52	12.5	
	LFP4024-08030A	24	8	3.0	0.75	18	
	LFP4024-08040A	24	8	4.0	0.75	18	
	LFP4024-09040A	24	9	4.0	1.0	24	



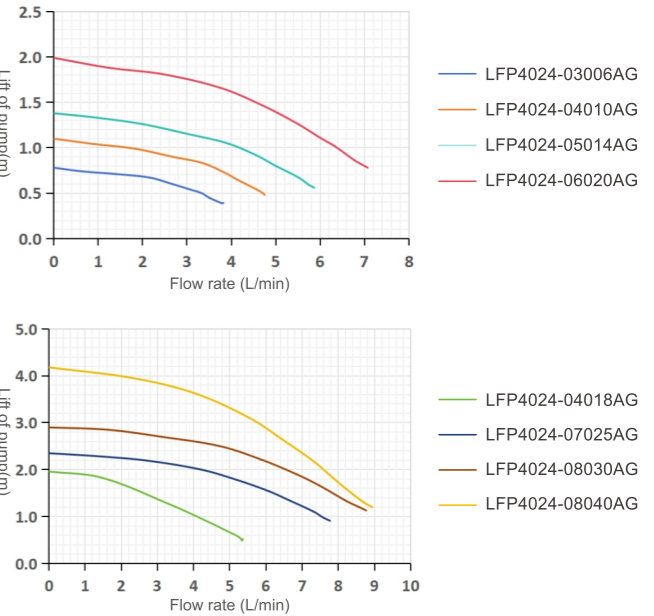
Connections:
Standard outlet DN8, inlet DN12.
It can be customized others as per request.

LFP40 SERIES

Brushless DC High Temperature Water Pump



○ Flow Curve

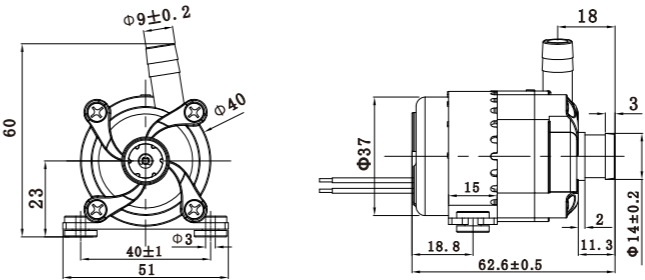


○ Working Conditions

Ambient temperature: -20~+40℃	Rated voltage: 24VDC	Insulation grade: F	IP grade: IP55
Medium temperature: -20~+105℃	Voltage range: 18~30VDC	Lifetime: 5000 hours	Medium: Cool water, hot water, and other fluid

○ Specifications

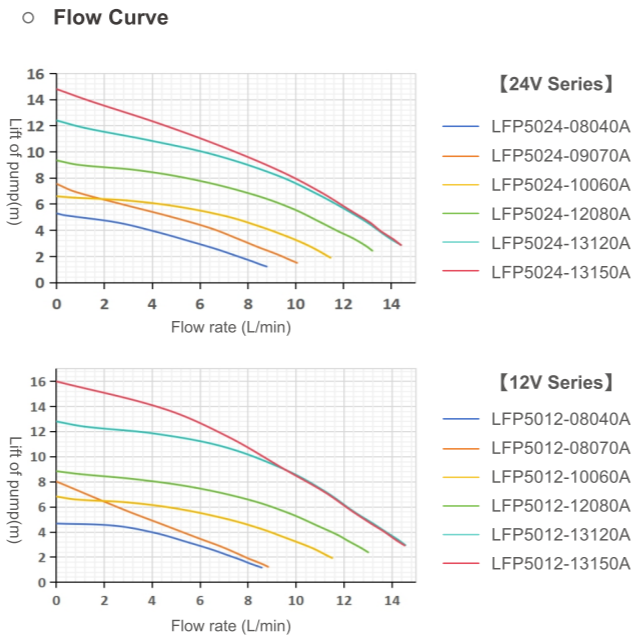
Model	Selections	Rated voltage (VDC)	Max. Flow rate (L/min)	Max. Lift of pump (m)	Max. Current (A)	Max. Power (W)	Controls
LFP4024 Series (High Temperature)	LFP4024-03006AG	24	3	0.6	0.13	3	· FG Signal · 0-5V speed regulation · PWM speed regulation
	LFP4024-04010AG	24	4	1.0	0.23	5.5	
	LFP4024-04018AG	24	4	1.8	0.23	5.5	
	LFP4024-05014AG	24	5	1.4	0.31	7.5	
	LFP4024-06020AG	24	6	2.0	0.42	10	
	LFP4024-07025AG	24	7	2.5	0.52	12.5	
	LFP4024-08030AG	24	8	3.0	0.75	18	
	LFP4024-08040AG	24	8	4.0	0.75	18	



Connections:
Standard outlet DN8, inlet DN12.
It can be customized others as per request.

LFP50-1 SERIES

Brushless DC Water Pump(8~13L)

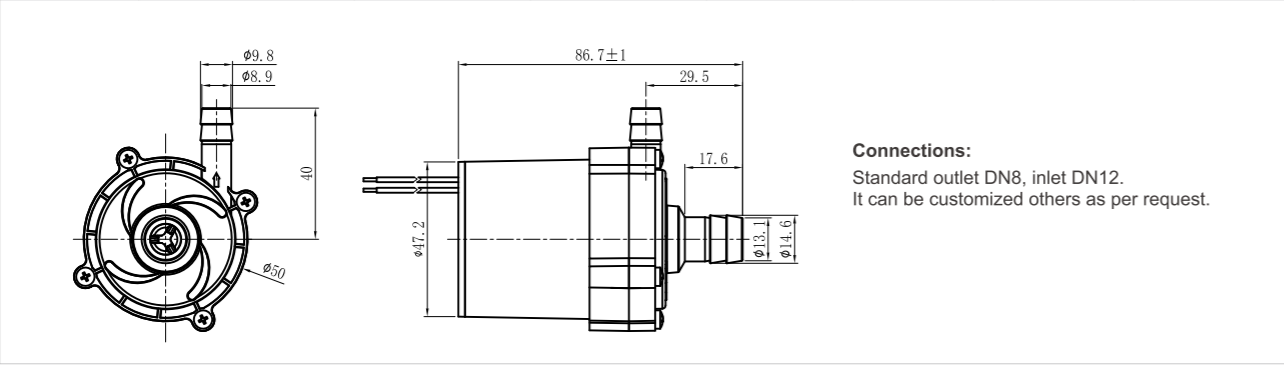


○ Working Conditions

Ambient temperature: -20~+40°C	Rated voltage: 12 or 24VDC	Insulation grade: F	IP grade: IP55 or IP68 optional
Medium temperature: -20~+60°C	Voltage range: 8~18 or 16~32VDC	Lifetime: 20000 hours	Medium: Cool water, hot water, and other fluid

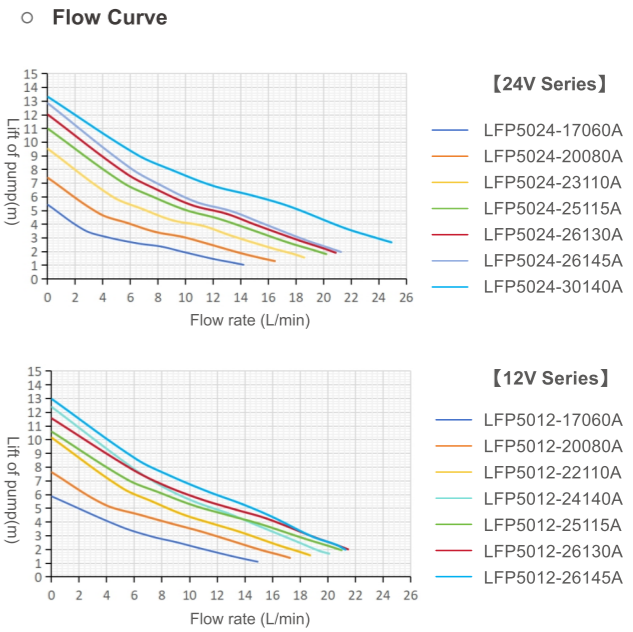
○ Specifications

Model	Selections	Rated voltage (VDC)	Max. Flow rate (L/min)	Max. Lift of pump (m)	Max. Current (A)	Max. Power (W)	Controls
LFP5024-1 Series	LFP5024-08040A	24	8	4	0.7	16.8	· FG Signal · 0-5V speed regulation · PWM speed regulation
	LFP5024-09070A	24	9	7	0.9	21.6	
	LFP5024-10060A	24	10	6	1.2	28.8	
	LFP5024-12080A	24	12	8	1.7	40.8	
	LFP5024-13120A	24	13	12	2.1	50.4	
	LFP5024-13150A	24	13	15	2.1	50.4	
LFP5012-1 Series	LFP5012-08040A	12	8	4	1.1	13.2	· PWM speed regulation
	LFP5012-08070A	12	8	7	1.3	15.6	
	LFP5012-10060A	12	10	6	2.1	25.2	
	LFP5012-12080A	12	12	8	3.1	37.2	
	LFP5012-13120A	12	13	12	4.3	51.6	
	LFP5012-13150A	12	13	15	4.3	51.6	



LFP50-2 SERIES

Brushless DC Water Pump(17~30L)

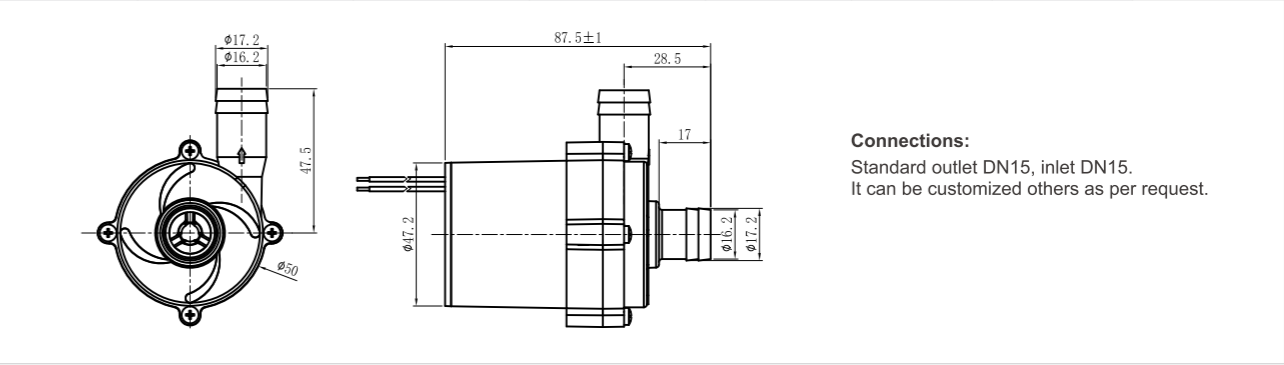


○ Working Conditions

Ambient temperature: -20~+40°C	Rated voltage: 12 or 24VDC	Insulation grade: F	IP grade: IP55 or IP68 optional
Medium temperature: -20~+60°C	Voltage range: 8~18 or 16~32VDC	Lifetime: 20000 hours	Medium: Cool water, hot water, and other fluid

○ Specifications

Model	Selections	Rated voltage (VDC)	Max. Flow rate (L/min)	Max. Lift of pump (m)	Max. Current (A)	Max. Power (W)	Controls
LFP5024-2 Series	LFP5024-17060A	24	17	6	0.8	19.2	· FG Signal · 0-5V speed regulation · PWM speed regulation
	LFP5024-20080A	24	20	8	1.1	26.4	
	LFP5024-23110A	24	23	11	1.6	38.4	
	LFP5024-25115A	24	25	11.5	1.7	40.8	
	LFP5024-26130A	24	26	13	1.9	45.6	
	LFP5024-26145A	24	26	14.5	2.2	52.8	
	LFP5024-30140A	24	30	14	2.2	52.8	
LFP5012-2 Series	LFP5012-17060A	12	17	6	1.4	16.8	· PWM speed regulation
	LFP5012-20080A	12	20	8	2	24	
	LFP5012-24140A	12	24	14	4.4	52.8	
	LFP5012-22110A	12	22	11	3.1	37.2	
	LFP5012-25115A	12	25	11.5	3.2	38.4	
	LFP5012-26130A	12	26	13	3.8	45.6	
	LFP5012-26145A	12	26	14.5	4.5	54	

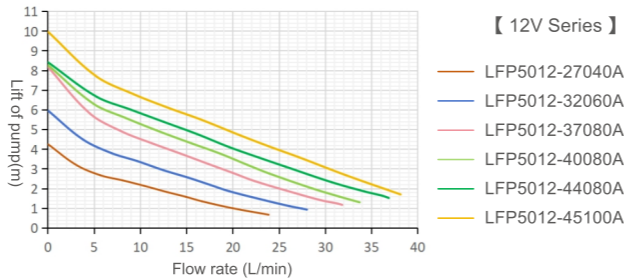
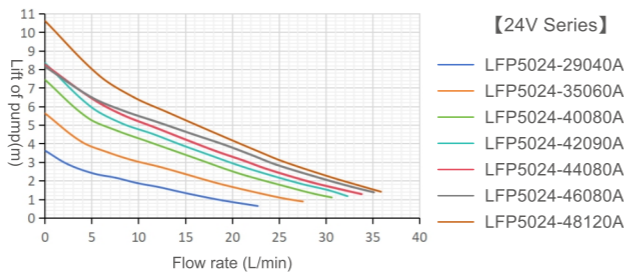


LFP50-3 SERIES

Brushless DC Water Pump (27~48L)



Flow Curve

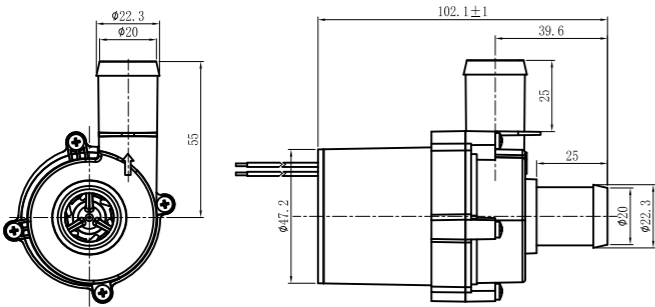


Working Conditions

Ambient temperature: -20~+40°C	Rated voltage: 12 or 24VDC	Insulation grade: F	IP grade: IP55 or IP68 optional
Medium temperature: -20~+60°C	Voltage range: 8~18 or 16~32VDC	Lifetime: 20000 hours	Medium: Cool water, hot water, and other fluid

Specifications

Model	Selections	Rated voltage (VDC)	Max. Flow rate (L/min)	Max. Lift of pump (m)	Max. Current (A)	Max. Power (W)	Controls
LFP5024-3 Series	LFP5024-29040A	24	29	4	0.9	21.6	• FG Signal • 0-5V speed regulation • PWM speed regulation
	LFP5024-35060A	24	35	6	1.4	33.6	
	LFP5024-40080A	24	40	8	1.8	43.2	
	LFP5024-44080A	24	44	8	1.8	43.2	
	LFP5024-42090A	24	42	9	2.1	50.4	
	LFP5024-46080A	24	46	8	2	48	
	LFP5024-48120A	24	48	12	3	72	
LFP5012-3 Series	LFP5012-27040A	12	27	4	1.5	18	• FG Signal • 0-5V speed regulation • PWM speed regulation
	LFP5012-32060A	12	32	6	2.4	28.8	
	LFP5012-37080A	12	37	8	3.8	45.6	
	LFP5012-40080A	12	40	8	3.9	46.8	
	LFP5012-44080A	12	44	8	5.1	61.2	
	LFP5012-45100A	12	45	10	5.6	67.2	



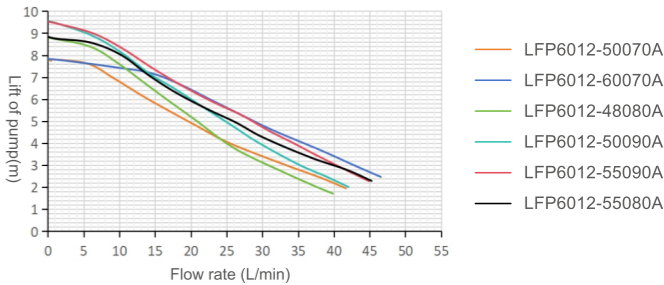
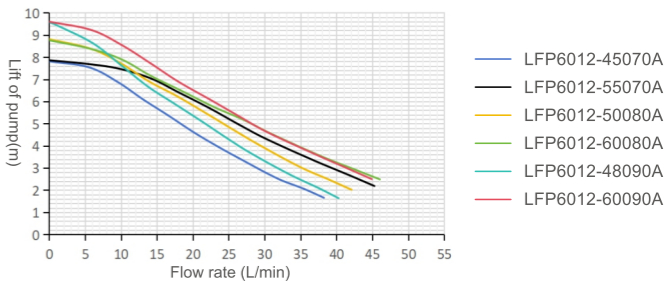
Connections:
Standard outlet DN20, inlet DN20.
It can be customized others as per request.

LFP60 SERIES

Brushless DC Water Pump



Flow Curve

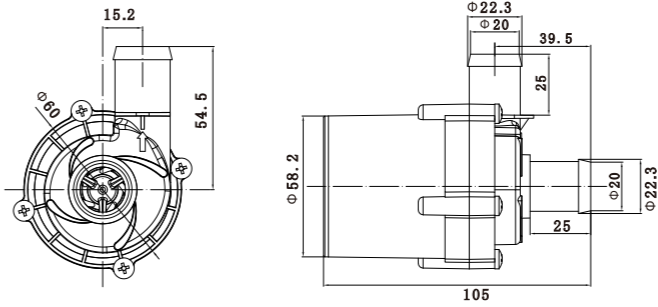


Working Conditions

Ambient temperature: -20~+40°C	Rated voltage: 12VDC	Insulation grade: F	IP grade: IP55 or IP68 optional
Medium temperature: -20~+60°C	Voltage range: 8~18VDC	Lifetime: 20000 hours	Medium: Cool water, hot water, and other fluid

Specifications

Model	Selections	Rated voltage (VDC)	Max. Flow rate (L/min)	Max. Lift of pump (m)	Max. Current (A)	Max. Power (W)	Controls
LFP6012 Series	LFP6012-45070A	12	45	7	3.7	44	• FG Signal • 0-5V speed regulation • PWM speed regulation
	LFP6012-50070A	12	50	7	4.0	48	
	LFP6012-55070A	12	55	7	4.7	56	
	LFP6012-60070A	12	60	7	5.6	67	
	LFP6012-48080A	12	48	8	4.7	56	
	LFP6012-50080A	12	50	8	4.7	56	
	LFP6012-55080A	12	55	8	4.7	56	
	LFP6012-60080A	12	60	8	5.6	67	
	LFP6012-48090A	12	48	9	5.0	60	
	LFP6012-50090A	12	50	9	5.5	66	
	LFP6012-60090A	12	60	9	6.2	75	
	LFP6012-55090A	12	55	9	5.5	66	



Connections:
Standard outlet DN20, inlet DN20.
It can be customized others as per request.